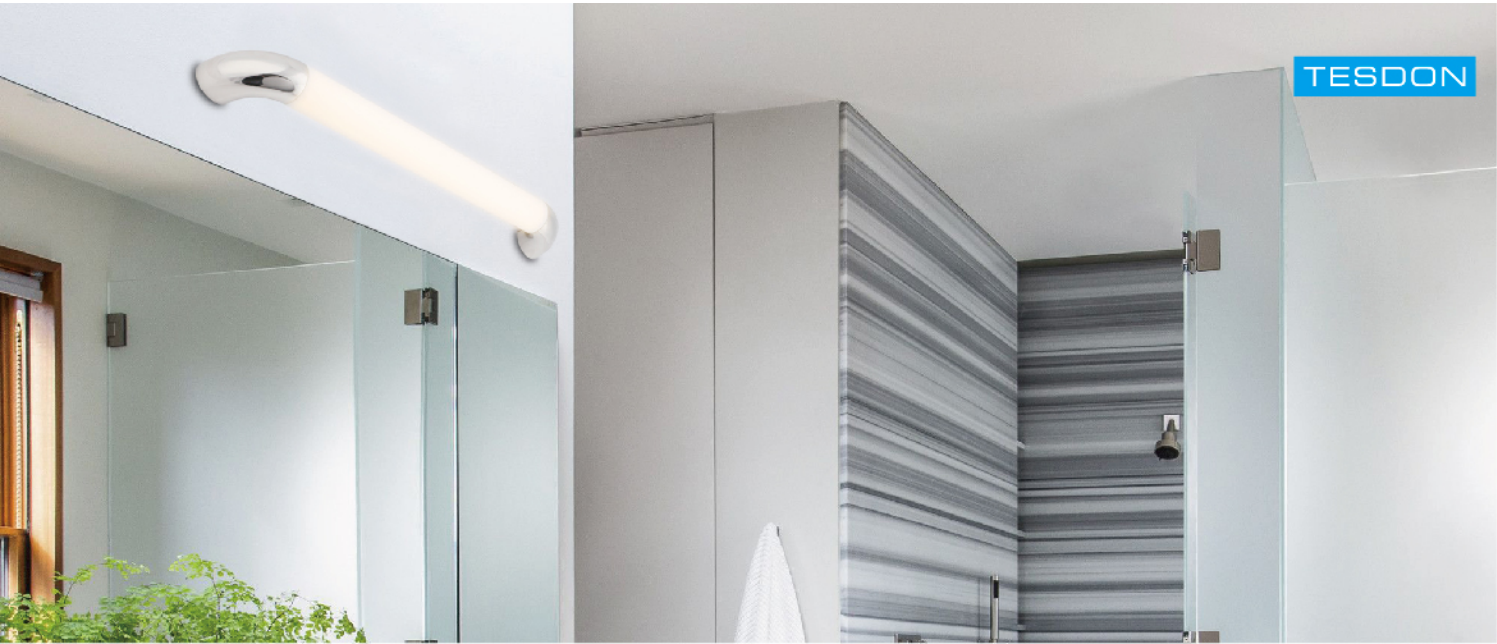
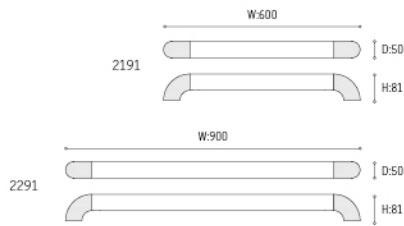


2191/2291



A Wall lamp with round arm in modern style, use typical round acrylic strip, strong quality collision with simple and fashion out shape. It has IP44 waterproof function and you can choose difference length.

LED: High voltage LED module/HONGLI or EPISTAR(SMD 2835 LED)  
PF: >0.5  
RA: >80  
Input voltage: 220~240V 50/60Hz  
Warranty: 3 years  
CCT: 3000K  
Energy efficiency: Variable LED lamps of the efficiency class A



Article no.	Description.	Features.	Lumens.
2191	LED Mirror Lamp	Stainless Steel shell+Acrylic cover / SMD LED 8W	340lm
2291	LED Mirror Lamp	Stainless Steel shell+Acrylic cover / SMD LED 12W	880lm